

MAKE UP NET SOFT WRITING TABLET CHAIR



The Makeup seat has a steel structure, chromed or painted, with seat and back in moulded recycled polypropylene, certified Remade in Italy. The aesthetics of the Makeup family are characterised by its curved and delicate lines that go in harmony with any community or contract environment. The collection offers a complete range of seats designed to meet every style and functional need. The innovative interlocking modular system, without the use of screws, can give rise to various compositions with a single frame: seats with or without armrests. With the same principle, a practical assembly system can be used to link several seats together, both with and without armrests. Also part of the family are: the task chair, the writing tablet chair, the stool and the bench. The versatility also extends to the choice of colour: six different colours are available. Of particular note is how effectively both the seat and the stool can be stacked.

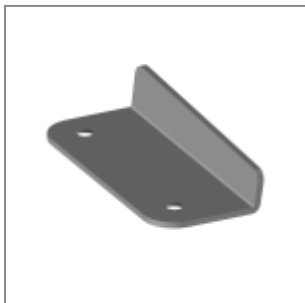
ACCESSORIES



Black painted trolley for writing tablet



Ca + ec + mk + Li chair trolley



Make Up black armrest linking device



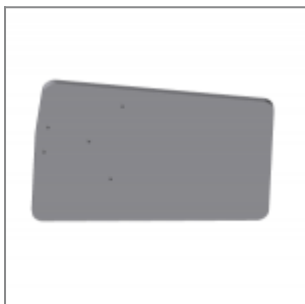
Front device Make Up with arms



Single felt dim10x24x4



Chrome metal left hand support for Ø14 allu.mechanism



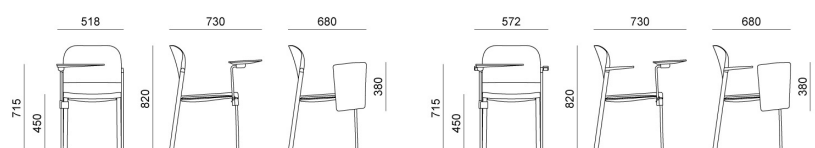
Black HPL writing tablet for left handed people FSC certified (to be assembled only to the mechanism ZASN30A90)

DIMENSIONS

MAKEUP

DESIGN

Basaglia + Rota Nodari



Sedia con scrittoio con e senza braccioli / Chair with writing tablet with and without arms